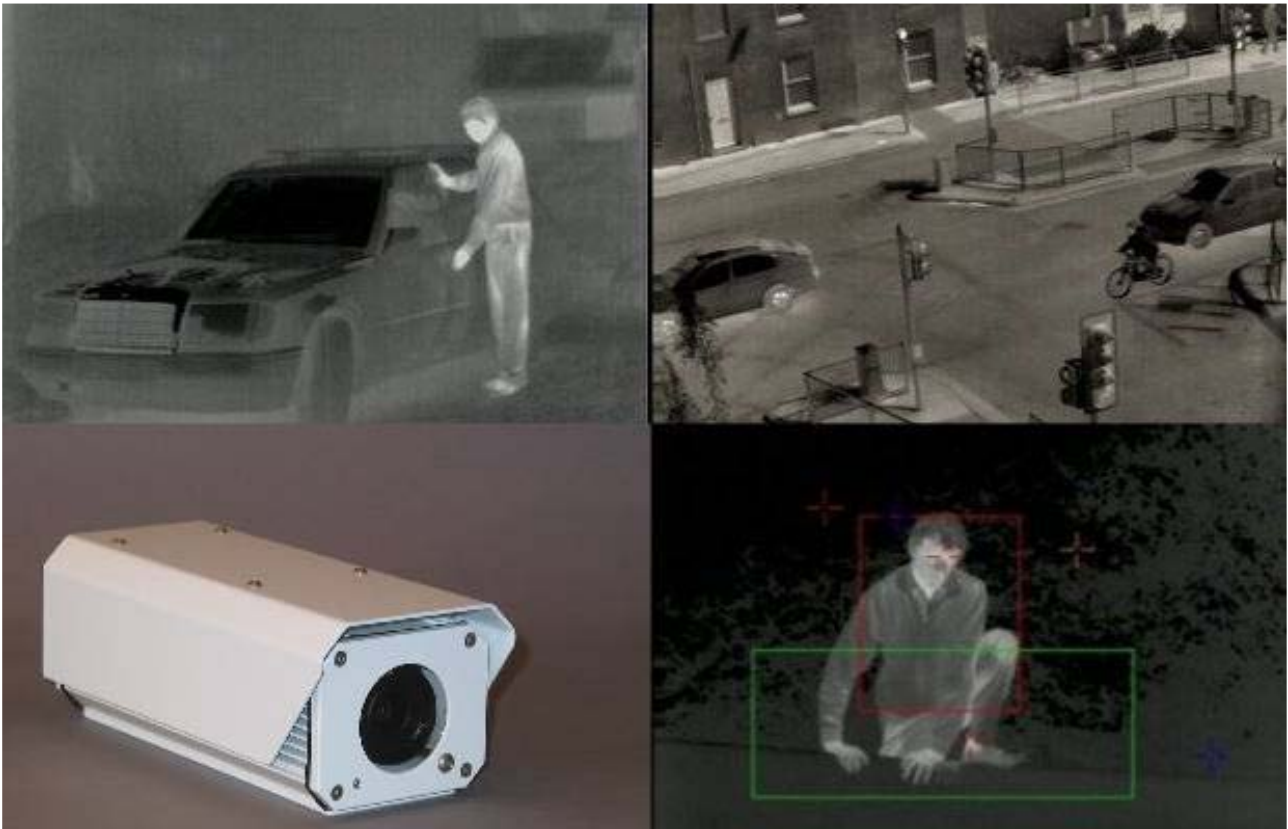


EV TI-7000 Thermal Imager

High Performance UnCooled Thermal Imager System

Eagle Vision TI-7000

THERMAL IMAGING CAMERA



- Serial Control RS-232
- Small Size & Light-weighted
- High Resolution Image (384x288 pixels)
- Powerful Functions
- Contrast & Brightness Adjustment
- Different Optional Lenses available
- Designed for all Infrared Systems
- Choice of fixed lenses available
- IP 65, nitrogen-filled



High resolution at 2000 meters

MAIN FEATURES

- Digital Zoom: 2x,4x, 8x
- Compact System
- High Resolution Image (384x288 pixels)
- Auto Calibration
- Contrast & Brightness Adjustment
- Different Optional Lenses available
- Designed for all Infrared Systems
- Auto/Manual HOT or COLD tracer
- Measurement Features

SYSTEM INTERFACE & PSU MODULE

The camera system, interfaces to the external equipment through the system interface module which provides the following functions:

- Interface to outside world through 14-pin MIL-connector
- Voltage conversion from 12V DC to internal voltages
- EMC filtering

SYSTEM FUNCTIONS

- Gain – Auto/Manual
- Auto exposure
- Reticule “on/off” and
- Positive/negative image
- Auto/Manual NUC
- Freeze/Live

FIXED FIELD OF VIEW LENSES

A choice of multi-element Germanium lenses with hard carbon coating are available with

- MTF @ 10 lp/mm: >50
- Transmission > 95% 8-12 μ m

FOCAL LENGTH	APERTURE	HFOV	IFOV
15 mm	F 1,0	48,3 ⁰	37,2 ⁰
30 mm	F 1,0	25,3 ⁰	19,1 ⁰
50 mm	F 1,0	15,3 ⁰	11,5 ⁰
75 mm	F 1,0	10,2 ⁰	7,7 ⁰
100 mm	F 1,0	58,5 ⁰	5,8 ⁰

EV TI-7000 Thermal Imager

High Performance UnCooled Thermal Imager System

PERFORMANCE SPECIFICATIONS

FPA DETECTOR	Alpha Silicon uncooled micro-bolometer
ARRAY SIZE	384x288 (110,592 pixels)
SPECTRAL BAND	7-14 μ m
PIXEL PITCH	35 μ
OPTICAL FILL	> 80%
NEDT	\leq 50mK @ 32°C
STANDARD FRAME RATE	50/60 Hz
EXTERNAL SYNC	Optional
DYNAMIC RANGE	14 bit
GAIN/LEVEL CONTROL	Auto/Manual
BRIGHTNESS/CONTRAST	Auto/Manual
TIME TO IMAGE	< 2 seconds
VIDEO OUTPUT FORMAT	PAL/NTSC
VIDEO OUTPUT DISPLAY	24 bit colour/8 bit monochrome
VIDEO FEATURES – IMAGING	Range 1: -20 - 150 °C Range 2: -30 – 500 °C
OPTICAL FILL FACTOR	80%
POWER	12 V DC

MECHANICAL SPECIFICATIONS

WEIGHT	1,5 kg
SIZE (LXWXH)	180x76x63

ENVIRONMENTAL SPECIFICATIONS

OPERATING AMBIENT TEMP	-20 to +50 °C
HUMIDITY	5-92% non condensing
POWER NOMINAL	< 3,3 W
POWER SAVING MODE	< 2,5 W
IP RATING	IP 65
PURGE FITTING	Standard valve to allow encasing to be filled with dry nitogene

united vision solutions, Co.

sales@unitedvisionsolutions.com
47 Stearns Terr, Chicopee, MA 01013
USA
+1-413-592-8477