

# Long Range Camera System

Our camera system designed for long range surveillance 24/7 utilized the most advance optical sensors and lenses

Day time, Night, Dark, Fog, Rain, and Smoke

Reduction of Airborne  
Interference, e. g. Fog,  
Rain, Sand, Smoke, Snow

Reduction of Heat Haze  
Image Stabilizer

Thermal Eye with 640x480 resolution utilized Digital Detail Enhancement

Day Camera with EMCCD that provides full-color, full-frame video images even at night.

Extreme Lens with Ultra-Telephoto recognizes 16' objects a mile away.

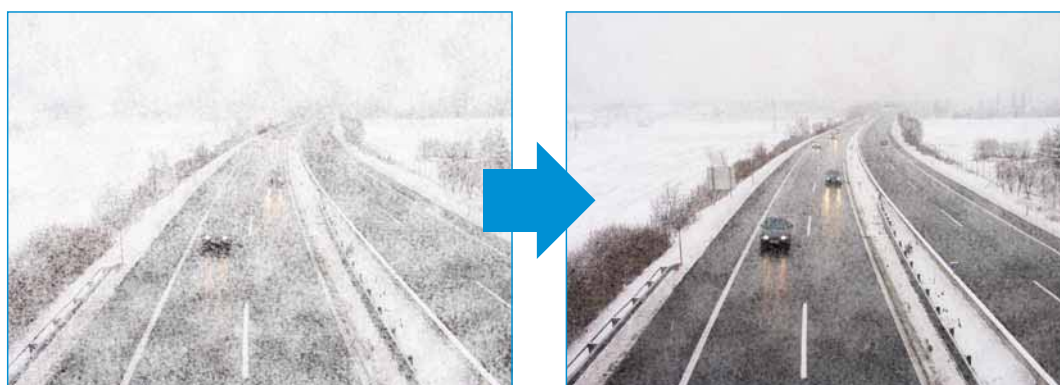
Amazing long focal length of **1680 mm** that captures distant objects.

Heavy Duty Stainless Steel Enclosure, Forget rust and salt air corrosion.  
Anti- Rust.                      Anti- Salt Air.                      Anti- Corrosion.

EV3000 using modern technology to reduce the temperature by 20C

Stabilized Pan/Tilt with Video Stabilization

The Day Camera System works in most weather and light conditions  
Reduces the affect of particles in the air, such as fog, rain,  
sand, smoke and snow.



**VISIBLE**

**EMCCD**

The Day Camera works at night, it reduce use of thermal camera

## PAN/TILT THERMAL & COLOR CAMERAS

- All Weather Stainless Steel Rugged Housing  
Anti-corrosion, Anti Rust, resist high humidity and salt water.  
Special Reflective paint to reduce heat by 15 degree.
- 128 preset positions for perimeter scanning, Tour function
- Pelco-D protocols , can be integrated with any other CCTV system
- Environmentally sealed and dry nitrogen filled
- Image overlay combines thermal and video image
- The EV3000 EMCCD colour night vision camera provides high resolution full colour images from full Sunlight down to quarter Moonlight, and thereafter monochrome images down to Starlight.



### Thermal Imager

- Cooled 3-5 micron InSb detector
- 640x480 Hi resolution  
250mm, 500mm, 750mm,  
1100mm Lenses

### Pan/Tilt resolution

High performance, brushless, maintenance-free step motors provide very precise, extremely effective motion control with preset and 0-360 degree endless rotation

### CCTV software with TCP/IP

- Full control of Thermal / Day-Night / Pan/Tilt  
Using standard Protocol Pelco-D

### Modes

EV3000-D-IR250  
EV3000-D-IR-500  
EV3000-D-IR750  
EV3000-D-IR-1100

### Day/Night Camera

- 1/2" High-Resolution EMCCD
- 0.000008 lx
- Lens 12-660mm 55X optical zoom  
30-1680mm
- Reproduces full colour, full motion images in starlight conditions

### Sensor Platform

- Heavy Duty, Stabilized Pan/Tilt
- Stainless Steel Enclosure,

This product can be used in any marine applications, harsh environment.

Anti-rust full sealed housing/ and Pan-Tilt.

Great for shore, sea ports or ship due to its material Stainless Steel 316 against corrosion.

### Options

- \* Digital real time video stabilization
- \* Washer 5 or 10 ltr



**Stainless Steel**

**Forget rust and salt air corrosion.**

**Anti- Rust. Anti- Salt Air. Anti- Corrosion**



Eagle Vision EV3000  
Dual Camera System  
Thermal and  
Color EMCCD

Thermal camera has 640x480 resolution, and Digital Detail Enhancement (DDE) video optimization algorithms.



**United Vision Solutions**  
A world without darkness

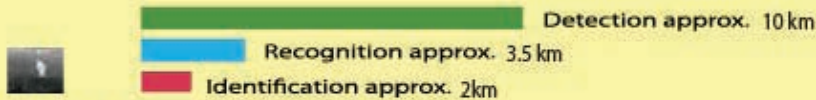
[www.LongRangeCamera.com](http://www.LongRangeCamera.com)  
10 Center St., Suite 401 & 402  
Chicopee MA 01013 USA  
[info@unitedvisionsolutions.com](mailto:info@unitedvisionsolutions.com)

Eagle Vision EV3000  
Dual Camera System  
Thermal and  
Color EMCCD

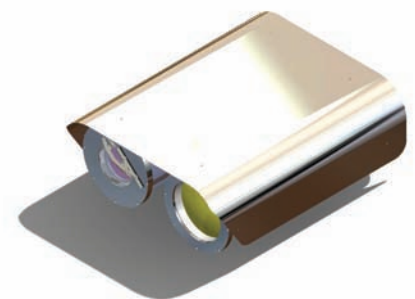
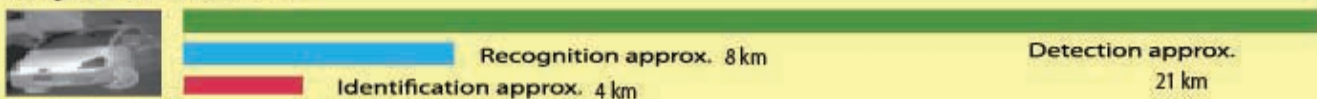
FEATURES		EV3000-D-IR-250
Thermal Imaging	Detector type Pixel Count (Resolution)	Indium Antimonide (InSb); 640x480 detector , 15µm micron pitch, high-resolution has 4-times the picture clarity of cameras that use medium format 320x240
	Spectral Response	3 - 5 µm
	Image processing	Digital Detail Enhancement (DDE) On/Standby/Off, Auto & manual Level, manual Gain, Polarity, reticle on/off/select, Non-Uniformity Correction, Change FOV, Focus
	FOV (H X V)	11.0° x 8.2° (WFOV) to 2.2° x 1.6° (NFOV)
	Digital Zoom	2X, 4X
	Focal Length (mm)	<b>50x250mm</b>
Video	Sensor	1/2 inch EM-CCD with electron multiplication High sensitivity color / monochrome camera
	Field of View (D x H x V)	40.84° to 0.69° (12-660mm) 15.12° to 0.27° (30-1580mm)
	Zoom	Optical:55X 12-660mm/30-1680mm 2.5X on/off
	Illumination	Minimum illumination 0.000008 lx
Pan & Tilt	Azimuth Control	360° continuous
	Elevation Control	± 90°
	Pan & Tilt Slew Rate	0 seconds to 60 seconds
	Pointing Accuracy	Pan ± 0.1° / Tilt ± 0.1°
Power	Power Source	10 - 28 VDC through supplied 110 /220 VAC power supply
Environmental Characteristics	Operating Temperature	-40° C to 55° C
	Environmental Sealing	Fully ruggedized

## Ev3000-D-250: range performance 250mm lens Resolution 640 x 480

Man: 1.8 m x 0.5 m

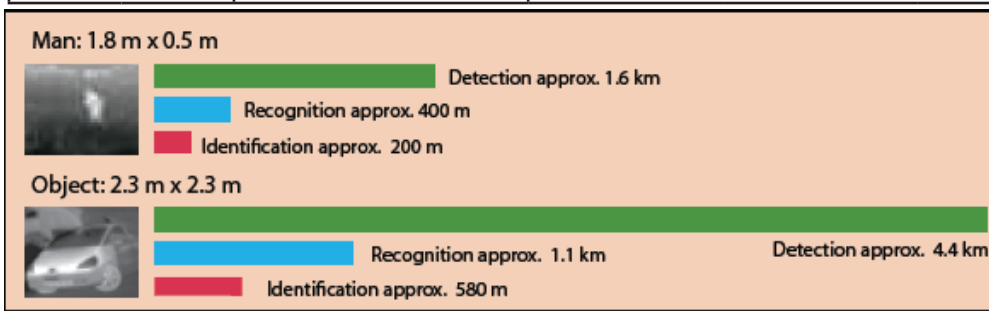


Object: 2.3 m x 2.3 m



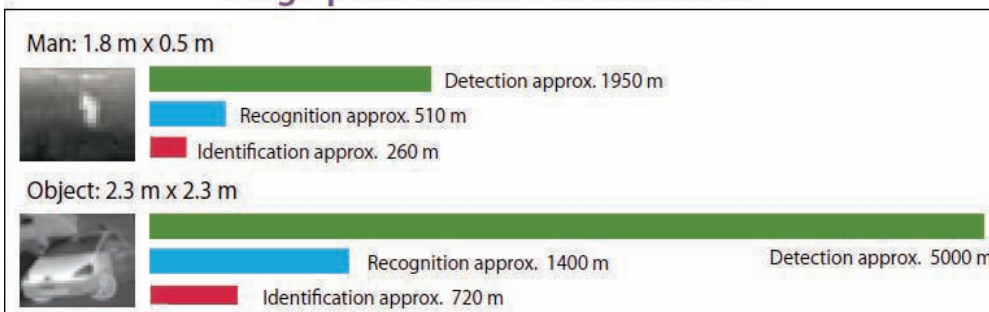
\*Specifications subject to change without notice. Export of the commodities described herein is strictly prohibited without a valid export license issued by the U.S. Department of State Office of Defense Trade Controls prescribed in the International Traffic in Arms Regulation (ITAR), Title 22, Code of Federal Regulation, Parts 120-130.

FEATURES		EV3000-D-IR-100	EV3000-D-IR-100H
Thermal Imaging	Detector type	Focal Plane Array/ uncooled microbolometer	Focal Plane Array/ uncooled microbolometer
	Pixel Count (Resolution)	324 X 256	644 X 512
	Spectral Response	7.5 to 13 $\mu$ m	
	Image processing	Automatic Gain Control (AGC), Digital Detail Enhancement (DDE)	
	FOV (H X V) Digital Zoom Focal Length (mm)	7° (H) x 5° (V) 2X, 4X (100H model) 100 mm	
Video	Sensor	1/2 inch CCD High sensitivity color / monochrome camera or 1/2 inch EMCCD	
	Field of View	40.84° to 0.69° (12-660mm) 15.12° to 0.27° (30-1580mm)	
	Zoom	Optical: 55X 12-660mm/30-1680mm with 2.5 extender	
	Illumination	0.000008 lx	
Pan & Tilt	Azimuth Control	360° continuous	
	Elevation Control	-90° +45°	
	Pan & Tilt Slew Rate	0 seconds to 60 seconds	
	Pointing Accuracy	Pan $\pm$ 0.1° / Tilt $\pm$ 0.1°	
Power	Power Source	10 - 28 VDC through supplied 110 /220 VAC power supply	
Environmental Characteristics	Operating Temperature	-40° C to 55° C	
	Environmental Sealing	Fully ruggedized IP66	



Ev3000-D-IR100

range performance 100 mm lens

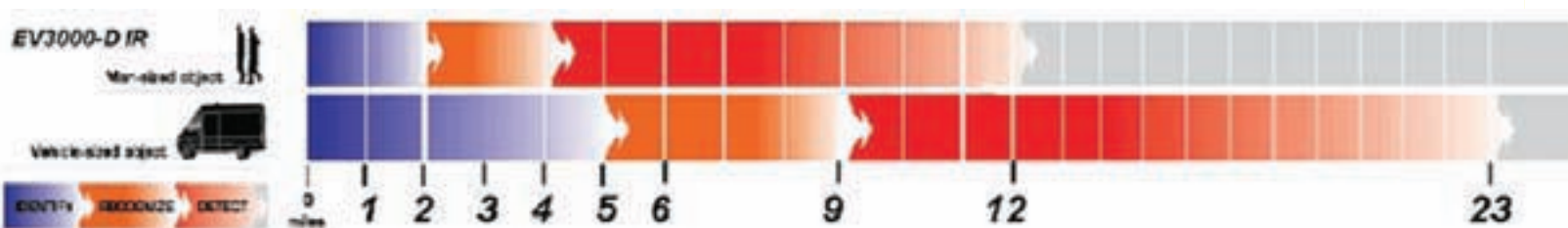


Ev3000-D-IR100H

Eagle Vision EV3000  
Dual Camera System  
Thermal and  
Color EMCCD

FEATURES		EV3000-D-IR-500
Thermal Imaging	Detector type	Indium Antimonide (InSb); 640x480 detector , 15µm micron pitch, high-resolution has 4-times the picture clarity of cameras that use medium format 320x240
	Pixel Count (Resolution)	
	Spectral Response	3 - 5 µm
	Image processing	Digital Detail Enhancement (DDE) On/Standby/Off, Auto & manual Level, manual Gain, Polarity, reticle on/off/select, Non-Uniformity Correction, Change FOV, Focus
	FOV (H X V)	5.5° x 4.1° (WFOV) to 1.1° x 0.8° (NFOV)      Dual Field OD View
	Digital Zoom	2X, 4X
	Focal Length (mm)	<b>150x500mm</b>
Video	Sensor	1/2 inch EM-CCD with electron multiplication High sensitivity color / monochrome camera
	Field of View (D x H x V)	40.84° to 0.69° (12-660mm) 15.12° to 0.27° (30-1580mm)
	Zoom	Optical: 55X 12-660mm/30-1680mm 2.5X on/off
	Illumination	Mnimum illumination 0.000008 lx
Pan & Tilt	Azimuth Control	360° continuous
	Elevation Control	± 90°
	Pan & Tilt Slew Rate	0 seconds to 60 seconds
	Pointing Accuracy	Pan ± 0.1° / Tilt ± 0.1°
Power	Power Source	10 - 28 VDC through supplied 110 /220 VAC power supply
Environmental Characteristics	Operating Temperature	-40° C to 55° C
	Environmental Sealing	Fully ruggedized


## Resolution 640 x 480 500mm lens



Detection	Human at 12 miles
	Truck at 23 miles
Recognition	Human at 4 miles
	Truck at 9 miles
Identify	Human at 2 miles
	Truck at 5 miles

Eagle Vision EV3000  
Dual Camera System  
Thermal and  
Color EMCCD

FEATURES		EV3000-D-IR-1100
Thermal Imaging	Detector type Pixel Count (Resolution)	Indium Antimonide (InSb); 640x480 detector , 15µm micron pitch, high-resolution has 4-times the picture clarity of cameras that use medium format 320x240
	Spectral Response	3 - 5 µm
	Image processing	Digital Detail Enhancement (DDE), Digital zoom 2X, 4X On/Standby/Off, Auto & manual Level, manual Gain, Polarity, reticle on/off/select, Non-Uniformity Correction, Change FOV, Focus
	FOV	6.3° to 0.5°
	Auto Focus Speed	≤ 3 sec
	Focal Length (mm)	<b>88-1100mm Continuous Zoom</b>
Video	Sensor	1/2 inch EM-CCD with electron multiplication High sensitivity color / monochrome camera
	Field of View	W23.48° - T0.46° (W17.67° - T0.34°)
	Zoom	Optical: 55X 15mm-825mm
	Illumination	Minimum illumination 0.000008 lx
Pan & Tilt	Azimuth Control	360° continuous
	Elevation Control	± 90 °
	Pan & Tilt Slew Rate	0 seconds to 60 seconds
	Pointing Accuracy	Pan ± 0.1° / Tilt ± 0.1°
Power	Power Source	10 - 28 VDC through supplied 110 /220 VAC power supply
Environmental Characteristics	Operating Temperature	-40° C to 55° C
	Environmental Sealing	Fully ruggedized

EV3000-D-IR1100	
<b>88mm x 1100mm</b>	
Continuous Zoom optics	12.5X, 88mm to 1100mm
HFOV range	6.3 degrees to 0.50 degrees
One shot Auto-focus	≤ 3 secs
FPA	640x480 pixels, 15 micron pitch
Sensitivity	MWIR 3.4 to 5 micron
Digital zoom	2X and 4X

for more information please visit [www.LongRangeCamera.com/ev3000dir.html](http://www.LongRangeCamera.com/ev3000dir.html)

# UNITED VISION SOLUTIONS, CO.

10 Center St., Suite 401 7 402, Chicopee, MA 01013 413-250-0903 413-592-8477 info@unitedvisionsolutions.com

Detection, Recognition, Identification (DRI)

 Detection  Recognition  Identification

## EV3000-D-IR1100

Human DRI



Lens:  
88 x 1,100mm



Field of View:  
Continuous Optical  
Zoom

0.5(H)°x0.38(V) to  
6.3°(H)x4.7°(V)

Resolution: 640x480

Microbolometer:  
Cooled

Vehicle DRI



~11,500 meters (11.5 km)

~17,000 meters (17 km)

~74,475 feet (14.10 Miles)